



GREY FOX CONCEPTS

**1/16 M113 A-Frame
Bracke x2
SKU: GFC160031**

Description: 1/16 M113 A-Frame Bracket to suit two M113 vehicle.

History: The Australian M113A1 was fitted with an A-Frame bracket and eyelet mount on the right-hand side of the hull roof, adjacent the commander's cupola or turret as part of an Australian modification. Check your references, as on some vehicles these mounts were removed to accommodate ammunition racks that were welded onto the M113 hull roof. See instructions for placement for both.

Parts: Two sets of Australian M113 A-Frame Bracket and eyelet. This update kit is suited to the Andy's Hobby HQ, M113A1/M113A1 ACAV AHHQ-009.

Safety: This is a 3D printed resin product. When working with this product, take precautions to prevent inhalation of the dust produce by cutting, sanding or filing. Wearing a dust mask and eye protection while working on the product. Work in a well-ventilated area.

Instructions:

A-Frame bracket and eyelet mount on the right-hand side of the hull roof, adjacent the commander's cupola. Check your reference before fixing.



Figure: 1

Figure 1 shows both eyelet and Bracket locations. The eyelet is mounted forward of the bracket.



Figure: 2

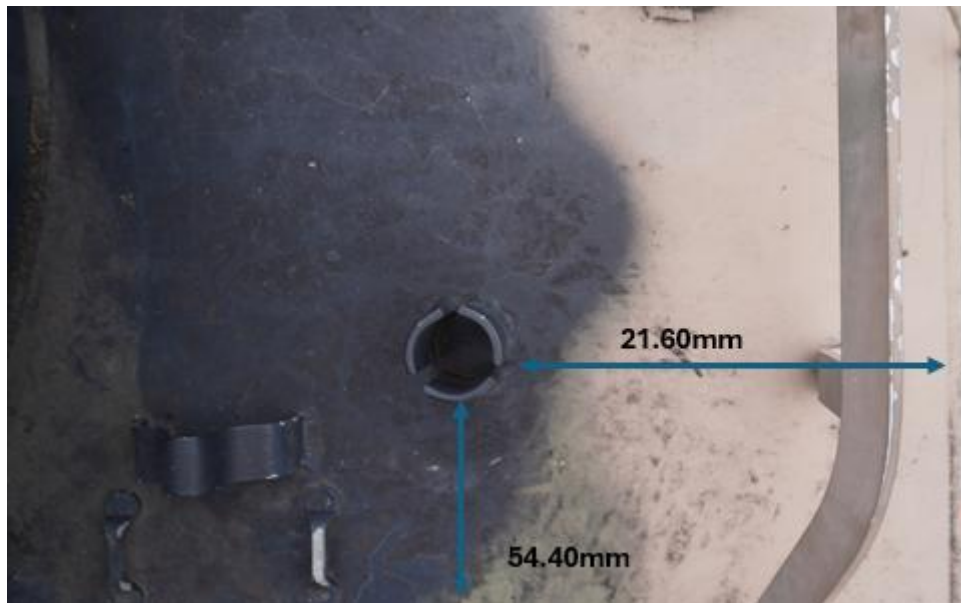


Figure: 3

Figure 2 shows the bracket location. It is positioned 21.6 mm from the side edge and 54.4 mm from the rear edge of the hull roof. Measurements are provided in 1/16 scale.

Figure 3 shows the location of the eyelet, which is forward of the bracket. The eyelet is 54.4 mm from the bracket and 21.6 mm from the edge of the hull roof. Measurements are provided in 1/16 scale.